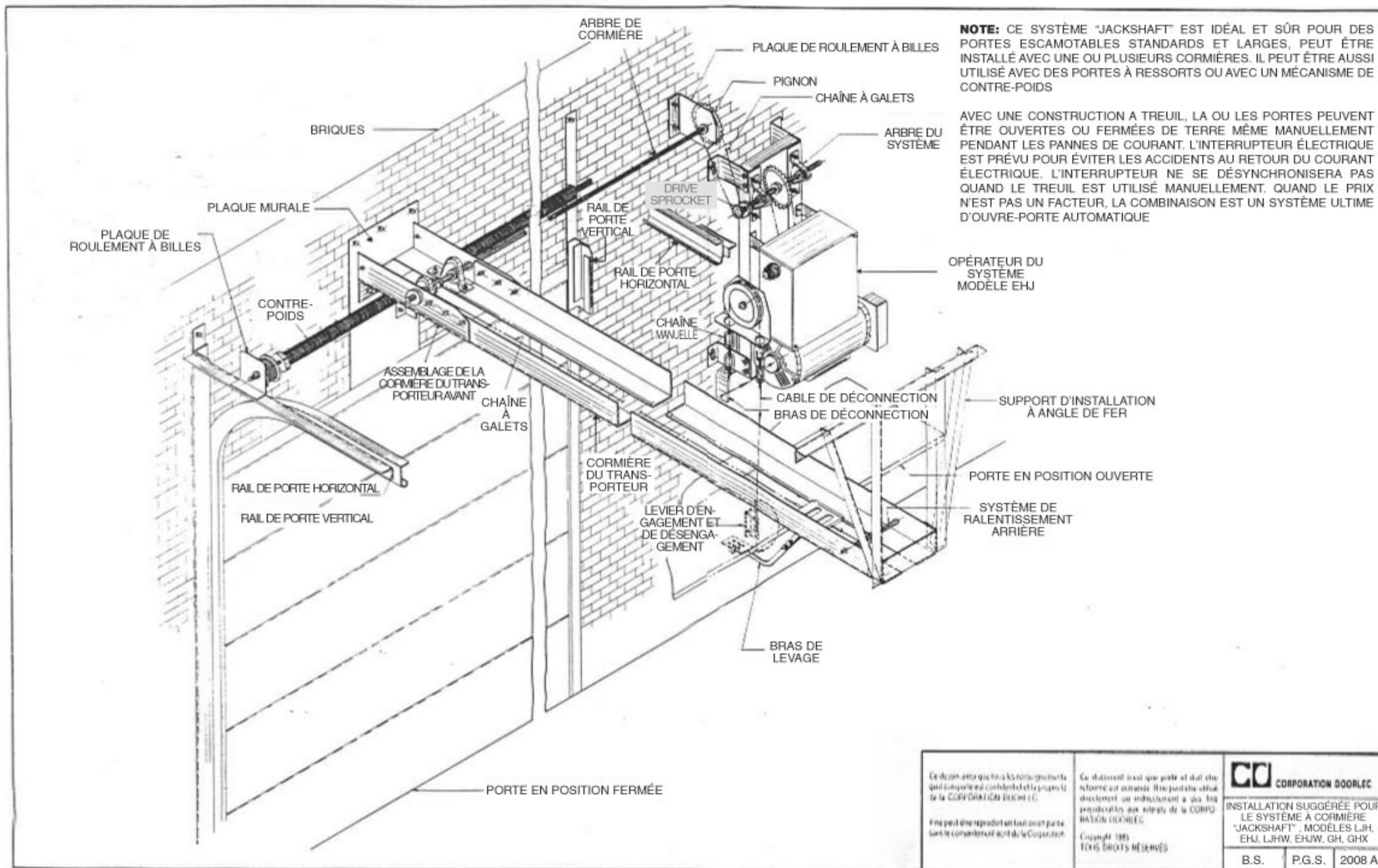


Technical Information

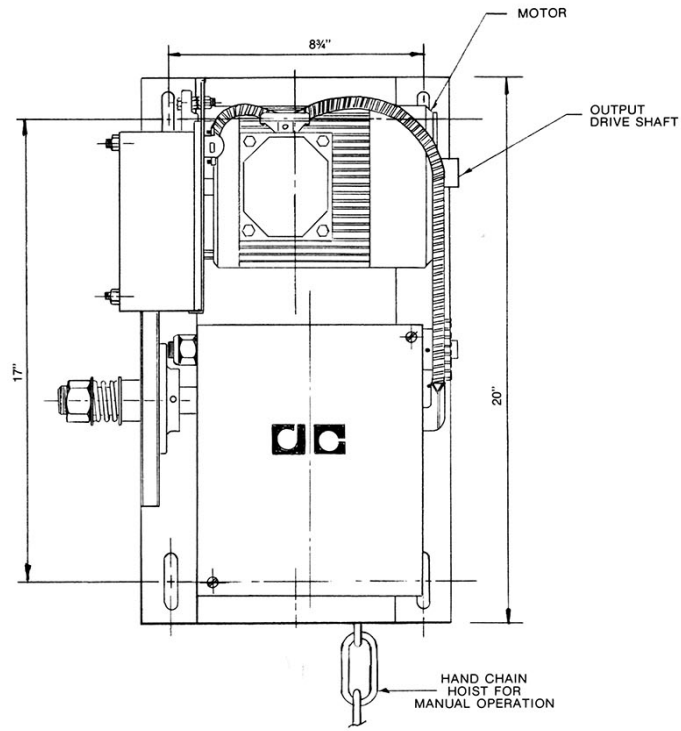
LJH



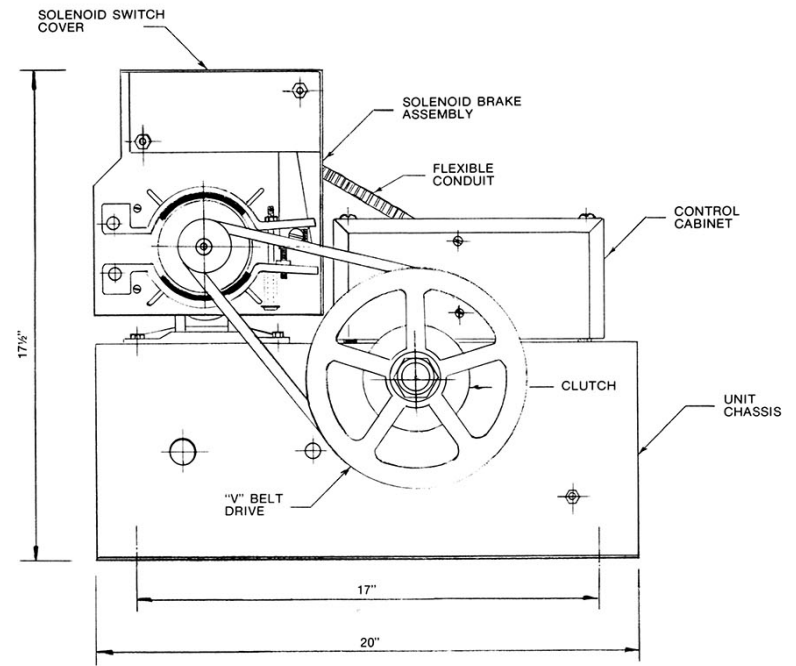
235 AVE LABROSSE, POINTE-CLAIRE,
MONTREAL, (QUEBEC) CANADA, H9R 1A3
TEL.: (514) 695-0772 - 800-667-0772
FAX: (514) 695-0248 - 800-667-0248
www.doorlec.com



<p>De droit de tous les droits réservés qui sont réservés à la Corporation Doorlec.</p>	<p>Ce document est un produit de la Corporation Doorlec. Il ne peut être réproduit ou distribué sans la permission écrite de la Corporation Doorlec.</p>	<p>CD CORPORATION DOORLEC</p>
<p>Ne peut être reproduit sans la permission écrite de la Corporation Doorlec.</p>	<p>Copyright 1985 Tous droits réservés</p>	<p>INSTALLATION SUGGÉRÉE POUR LE SYSTÈME À CORMIÈRE "JACKSHAFT", MODÈLES LJH, EHJ, LJHW, EHJW, GH, GHX</p>
<p></p>	<p></p>	<p>B.S. P.G.S. 2008 A</p>



PLAN VIEW



ELEVATION VIEW

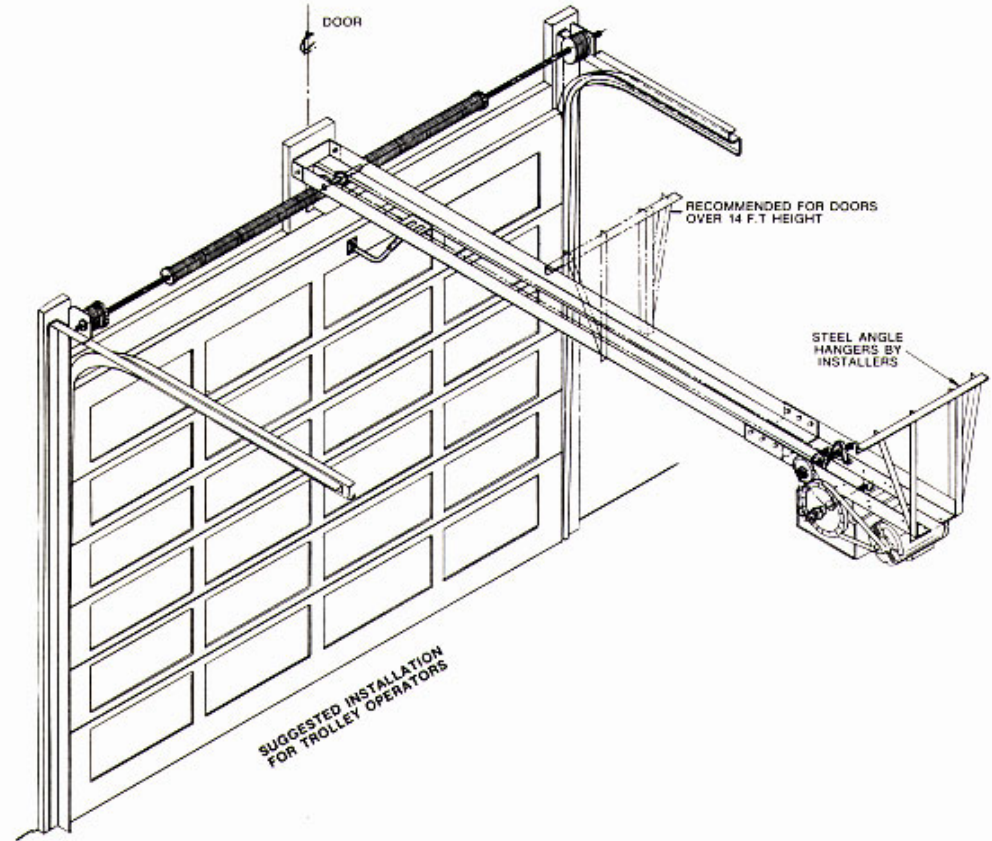
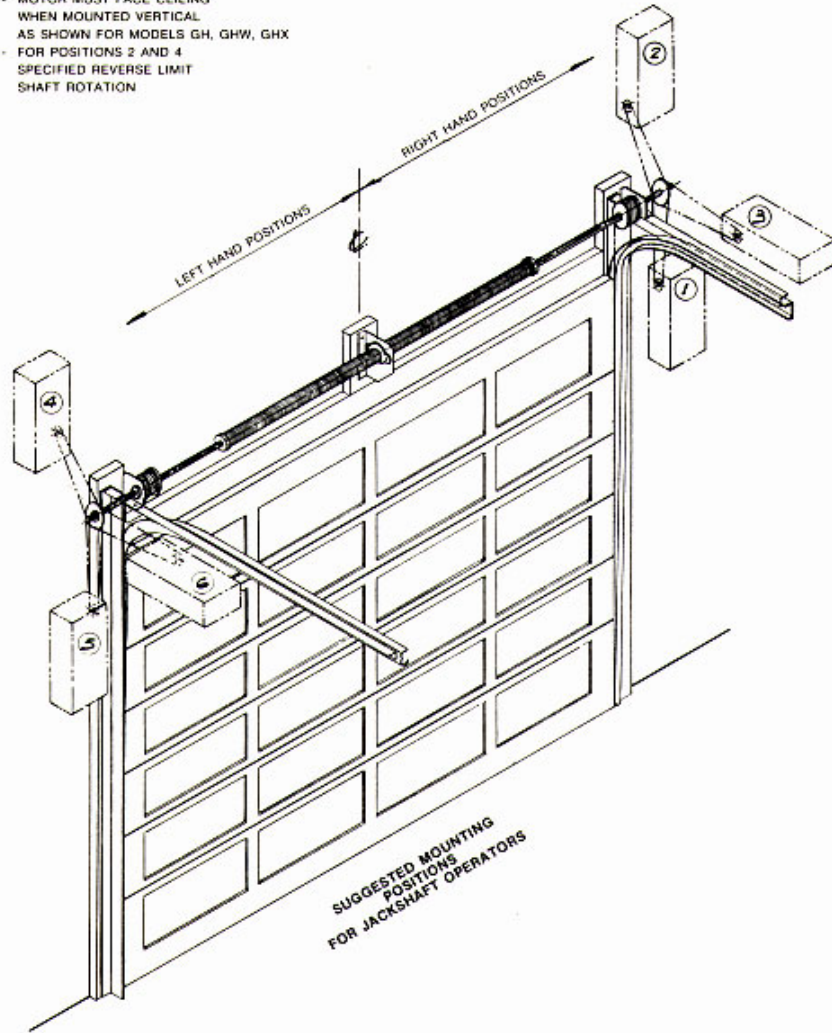
FOR EXPLODED VIEW
SEE DRAWING NO. 1056A

<p>This drawing and all information contained thereon is confidential and the property of DOORLEC CORPORATION.</p> <p>It may not be reproduced in whole or in part without express written consent.</p>	<p>This document is loaned subject to be returned upon demand. It may not be used directly or indirectly for purposes detrimental to the interests of DOORLEC CORPORATION.</p> <p>Copyright 1985 ALL RIGHTS RESERVED</p>	<p>DC DOORLEC CORPORATION</p>		
		<p>MODEL LJH ASSEMBLY</p>		
		Date: May 85	Approved P.G.S.	Drawg. No. 3007

- POSITIONS**
- 1- BELOW DRIVEN SHAFT R.H.
 - 2- ABOVE DRIVEN SHAFT R.H.
 - 3- SHELF MOUNT R.H.
 - 4- ABOVE DRIVEN SHAFT L.H.
 - 5- BELOW DRIVEN SHAFT L.H.
 - 6- SHELF MOUNT L.H.

NOTE

- MOTOR MUST FACE CEILING WHEN MOUNTED VERTICAL AS SHOWN FOR MODELS GH, GHW, GHX
- FOR POSITIONS 2 AND 4 SPECIFIED REVERSE LIMIT SHAFT ROTATION



This drawing and all information contained herein is confidential and the property of DOORLEC CORPORATION.
It may not be reproduced in whole or in part without express written consent.

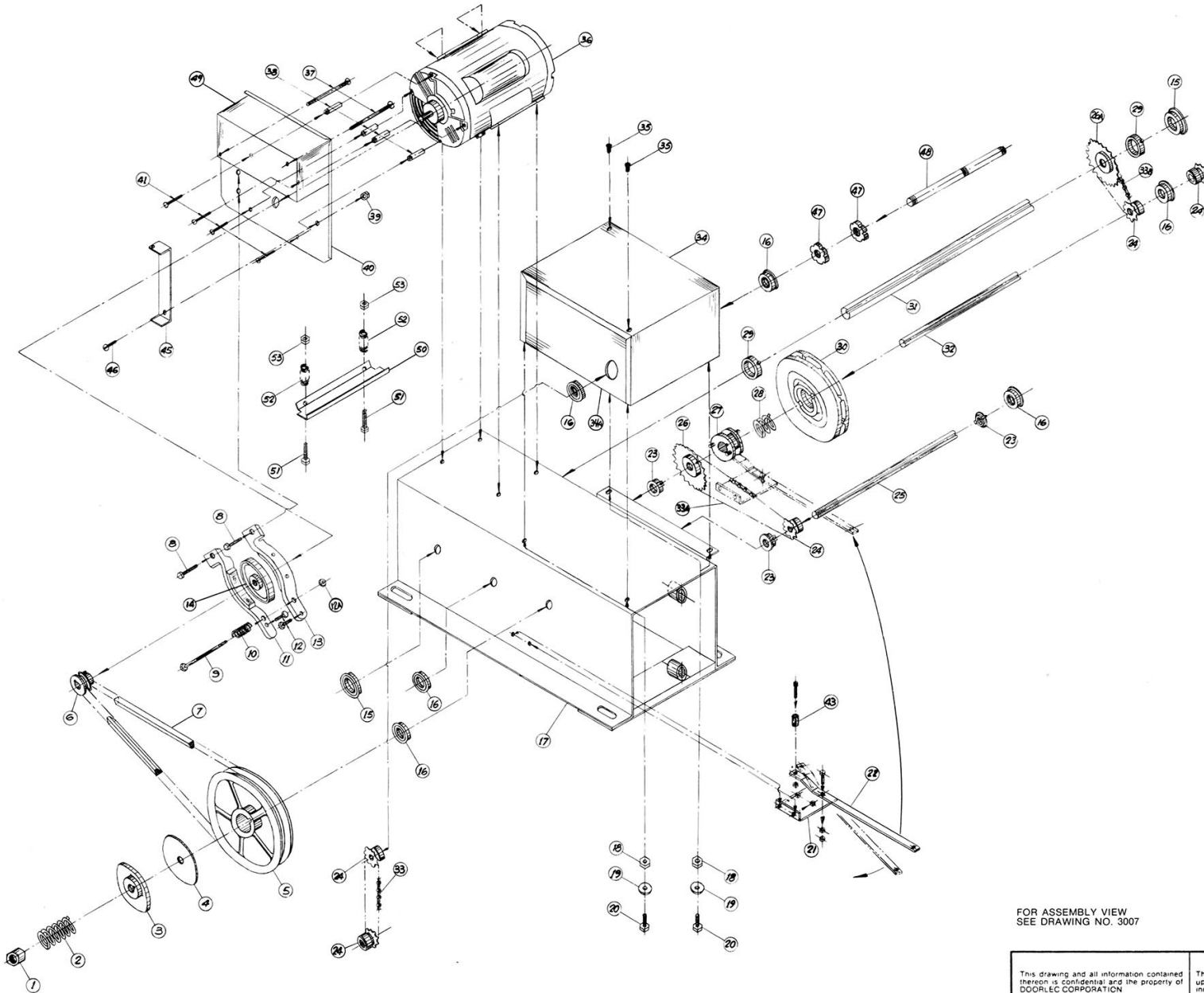
This document is loaned subject to be returned upon demand. It may not be used directly or indirectly for purposes detrimental to the interests of DOORLEC CORPORATION.
Copyright 1985
ALL RIGHTS RESERVED

CC DOORLEC CORPORATION		
ELECTRIC OPERATORS JACKSHAFT & TROLLEY INSTALLATION		
Date: April 1987	Approved P.G.S.	Draw. No. 3027

EXPLODED VIEW

LJH

**PARTS LIST
MODEL LJH
Drawing no 1056 A
MECHANICAL**



PART NO.	DRAWING CODE NO.	DESCRIPTION
1	1056 A 11287	Nut, 5/8" (1.59 cm) castellated
2	1056 A 20103	Clutch spring
3	1056 A 12502	Clutch plate, aluminum 4" (10 cm) dia. x 5/8" (1.56 cm) bore
4	1056 A 12575	Clutch disc, asbestos 4" (10 cm) dia. x 5/8" (1.56 cm) bore
5	1056 A 34104	"V" Belt pulley 705 7" (17.5 cm) x 5/8" (1.59 cm) bore
6	1056 A 34202	"V" Belt pulley MA15 1 1/2" (3.75 cm) x 5/8" (1.59 cm) bore
7	1056 A 19045	"V" Belt 4L360
8	1056 A 11261	Cap screw, hex 1/2" x 1 1/2" (6.3 cm x 3.8 cm)
9	1056 A 11202	Cap screw 1/2" (6.3 cm)-20 x 4" (10 cm) long
10	1056 A 20001	Brake spring
11	1056 A 12563	Brake shoe, upper
12	1056 A 11270	Cap screw, hex 1/2" x 1"
12A	1056 A 11280	Nut, 1/2" (6.3 cm) - 20 nylon insert
13	1056 A 12562	Brake shoe, lower
14	1056 A 12561	Brake drum 4" (10 cm) dia.
15	1056 A 28204	Flange bearing F-360-15 1" (2.5 cm) bore
16	1056 A 28002	Flange bearing F-360-13 3/4" (1.59 cm) hole
17	1056 A 14318	Unit chassis
18	1056 A 11811	Nut 1/2" (6.3 cm) - 20
19	1056 A 11377	Lock washer 1/4" (6.3 cm)
20	1056 A 11376	Cap screw 1/2" (6.3 cm) - 20 x 3/4" (1.9 cm)
21	1056 A 14299	Bracket, disconnect arm
22	1056 A 14219	Disconnect arm
23	1056 A 26180	Shaft collar 5/8" (1.56 cm) bore
24	1056 A 31107	Sprocket 41B29 - 5/8" (1.59 cm) bore SS
24A	1056 A 31105	Sprocket 41B23 - 1" (2.5 cm) bore KW/SS
25	1056 A 26124	Shaft, threaded 5/8" (1.56 cm) - 18 x 1/2" (30.5 cm)
26	1056 A 31343	Sprocket 41B23 - 5/8" (1.56 cm) bore
26A	1056 A 31105	Sprocket 41B23 - 1" (2.5 cm) bore KW/SS
27	1056 A 12123	Coupling 1 3/4" (4.38 cm) x 5/8" (1.59 cm) bore 4 pins
28	1056 A 20104	Coupling spring - 5/8"
29	1056 A 26080	Shaft collar - 1" (2.5 cm) hole
30	1056 A 12512	Pocket wheel 5/8" Oilite
31	1056 A 26151	Shaft 12" x 1" dia. (30 x 2.5 cm) - keyway
32	1056 A 26253	Shaft 9 1/2" (24.38 cm) x 5/8" (1.59 cm) dia. keywayed
33	1056 A 24041	Roller chain RC41
33A	1056 A 24011	Connecting link #41
34	1056 A 42402	Cover, control cabinet
34A	1056 A 42401	Base, control cabinet
35	1056 A 11099	Truss head Bolt 10-32 x 3/4"
36	1056 A	Electric motor (see name plate for H.P. and voltage)
37	1056 A 11231	Stove bolts 1/2" (6.3 cm)-20 x 3 1/2" (8.75 cm)
38	1056 A 11291	Nut, hex 10 - 24
39	1056 A 11280	Nut, 1/2" (6.3 cm) - 20 nylon insert
40	1056 A 14213	Brake plate
41	1056 A 11291	Nut, hex 10 - 24
43	1056 A 11838	Roller nylontron disconnect arm
45	1056 A 14211	Solenoid-brake lever, upper
46	1056 A 11198	Truss head bolt 1/2" - 20 x 3/4" (6.3 cm - 20 x 1.9 cm)
47	1056 A 11801	Oilite cam, grooved 5/8" (1.59 cm) - 24 x 3/8" (9.5 mm) wide
48	1056 A 26140	Cam shaft, threaded 5/8" (1.59 cm) - 24 x 10 3/4" (26.88 cm) long
49	1056 A 30010	Cover, solenoid switch
50	1056 A 26117	Cam retainer plate
51	1056 A 11261	Cap screw, hex 1/2" x 1 1/2" (6.3 cm x 3.8 cm)
52	1056 A 20111	Cam retainer plate springs
53	1056 A 11280	Nut, 1/2" (6.3 cm) - 20 nylon insert
54	1056 A 11282	Nut, nylon insert No. 6 (not shown)
55	1056 A 11283	Nut No. 6 (not shown)
56	1056 A 11361	Lock washer #6 (not shown)
57	1056 A 11199	No. 6 Limit Switch Spacer (not shown)
58	1056 A 11201	Machine Bolt No. 6 x 2" (5 cm) (not shown)

FOR ASSEMBLY VIEW
SEE DRAWING NO. 3007

<p>This drawing and all information contained therein is confidential and the property of DOORLEC CORPORATION</p> <p>It may not be reproduced in whole or in part without express written consent</p>	<p>This document is loaned subject to be returned upon demand. It may not be used directly or indirectly for purposes detrimental to the interests of DOORLEC CORPORATION.</p> <p>Copyright 1988 ALL RIGHTS RESERVED</p>	<p>CD DOORLEC CORPORATION</p>		
		<p>MODEL LJH EXPLODED VIEW</p>		
		Date: April 1987	Approved P.G.S.	Drwg. No. 1056 A

HORSEPOWER SELECTION GUIDE / Maximum door ht. 18' (5.5m)

Motor	Door of wood or aluminium	Fiberglass	Steel door 20 ga.	Rolling door or grille	Unballanced door wt.
1/3 H.P. 249W	224 sq.ft. 21m ²	256 sq.ft. 24m ²	144 sq.ft. 13,4m ²	120 sq.ft. 11m ²	700 lbs. 317 kg.
1/2 H.P. 373W	256 sq.ft. 24m ²	288 sq.ft. 27m ²	196 sq.ft. 18m ²	144 sq.ft. 13,4m ²	850 lbs. 386 kg.
3/4 H.P. 560W	288 sq.ft. 27m ²	320 sq.ft. 30m ²	256 sq.ft. 24m ²	196 sq.ft. 18m ²	1000 lbs. 454 kg.

IMPORTANT NOTICE

Electrical wiring shown are for all our electric door, gate, traffic control barrier operators built with the Logic Controller DC2000 since 1994.

For electric operator prior of 1994 please fax or email the serial number and model of operator, we will fax you the appropriate electrical drawing for that unit for per usual.

You will find the serial number on the control cabinet cover sticker. The first two digits represent the year of fabrication and the 4 or 5 next digits are the serial number.

40a
(115v.)

41a
(230v.)

42a
(208v./460v./575v.)